

## Wafer type

Face to face dimension to ISO 5752 short, basic series 20 (BS 5155 wafer short, DIN 3202-K1)  
Flange connection to ISO 7005-2 (BS EN 1092-2: 1997, DIN 2501)

### Use:

For water and neutral liquids to  
max. 120°C

### Tests:

Hydraulic test:  
Disc sealing: 1.1 x PN  
Disc strength: 1.1 x PN  
Body: 1.5 x PN (Min.)  
Function test: 1 x open/close

### Actuation:

Lever  
Wormgear, with handwheel  
Pneumatic actuator (Single/double acting)  
Electric actuator  
Extension spindle

See separate data sheets

### Approvals:

DVGW  
KIWA - NL  
WRC approved  
SVGW  
JKR

### Materials:

Body	Cast iron, GG-25, to DIN 1691 (BS 1452 grade 250)
External coating	Epoxy 200 µ, ral 5017
Lining	EPDM vulcanized to the body
Disc	DN ≤ 300: Stainless steel AISI 431 (BS 431S29)  DN ≥ 350: Ductile iron, GGG-40, to DIN 1693, (BS 2789 grade 420 - 12 min.), coated with 340 µ epoxy
Shaft and conical pin	Stainless steel AISI 431(BS 431S29)
Top shaft sealing	DN ≤ 350: 2 EPDM O-rings placed in a bushing of bronze RG10  DN ≥ 400: EPDM O-ring placed in a bushing fixed with countersunk screws of galvanized steel 8.8
Bottom shaft sealing	DN ≤ 350: Plug of galvanized steel 8.8 with one copper sealing ring.  DN ≥ 400: Axial bearing and ring of alu bronze, EPDM O-ring. Cover plate and screws of galvanized steel 8.8
Top and bottom bearing	Steel permaglide P10 coated with PTFE

### Centring between pipe flanges:

DN 40 - 300	Bolts around the body
DN 350 - 600	With centring holes
DN 700 - 1000	Centring holes and tapped lugs

For additional information see technical data sheet



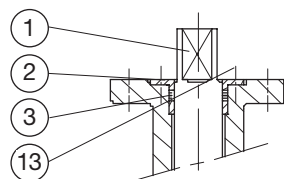
## Wafer type

Face to face dimension to ISO 5752 short, basic series 20 (BS 5155 wafer short, DIN 3202-K1)

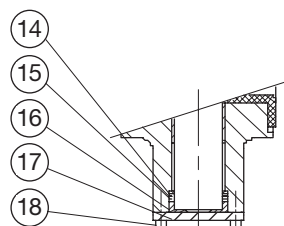
Flange connection to ISO 7005-2 (BS EN 1092-2: 1997, DIN 2501)

## Component list

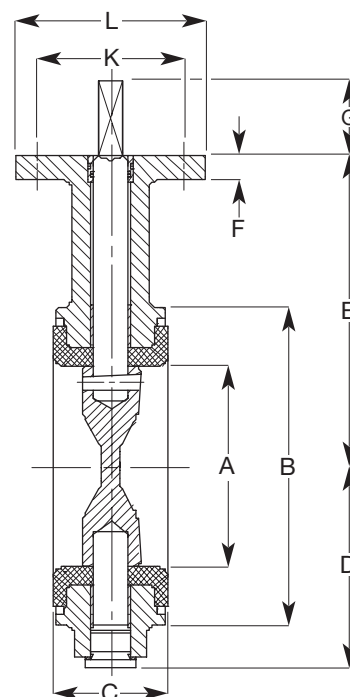
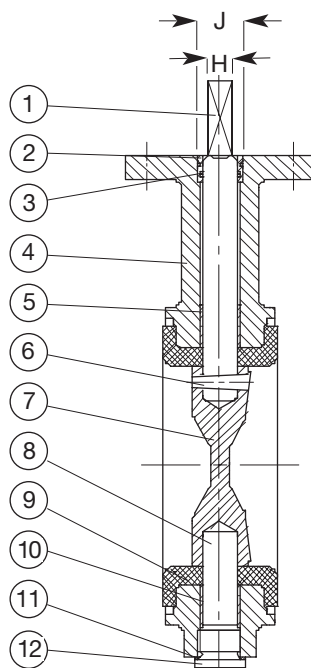
- |                |                  |                   |
|----------------|------------------|-------------------|
| 1. Shaft       | 7. Disc          | 13. Screw         |
| 2. Bushing     | 8. Shaft         | 14. Ring          |
| 3. O-ring      | 9. Lining        | 15. O-ring        |
| 4. Body        | 10. Bearing      | 16. Axial bearing |
| 5. Bearing     | 11. Sealing ring | 17. Cover plate   |
| 6. Conical pin | 12. Plug         | 18. Screw         |



DN > 350



DN > 350



Ref. nos.	DN	A mm	B mm	C mm	D mm	E mm	F mm	G mm	H mm	J mm	K mm	L mm	Top flange		SO 5211	Weight kilos
													ds mm	Holes		
75-040-101041009	40	40	85	33	58	113	12	34	10	18	70	90	9	4	F07	2.5
75-050-101041009	50	50	100	43	63	118	12	34	10	18	70	90	9	4	F07	2.6
75-065-101041009	65	65	115	46	71	126	12	34	10	18	70	90	9	4	F07	3.2
75-080-101041009	80	80	130	46	78	133	12	34	10	18	70	90	9	4	F07	3.5
75-100-101041009	100	100	150	52	96	147	12	34	12	22	70	90	9	4	F07	4.5
75-125-101041009	125	125	182	56	109	160	12	34	12	22	70	90	9	4	F07	6.3
75-150-101041009	150	150	210	56	133	180	14	34	16	30	70	90	9	4	F07	8.8
75-200-101040009	200	200	262	60	158	204	14	34	16	30	70	90	9	4	F07	13.2
75-250-101040009	250	250	315	68	194	245	15	45	24	38	102	125	11	4	F10	22.0
75-300-101040009	300	300	371	78	219	270	15	45	24	38	102	125	11	4	F10	32.0
75-350-101240009	350	336	405	78	256	315	15	45	24	38	102	125	11	4	F10	40.0
75-400-101240009	400	386	470	102	308	363	25	50	30	90	140	175	17	4	F14	75.0
75-450-101240009	450	436	522	114	334	388	25	50	30	90	140	175	17	4	F14	90.0
75-500-101240009	500	486	576	127	360	413	25	50	30	90	140	175	17	4	F14	120.0
75-600-101240009	600	586	672	154	426	510	25	50	40	100	140	175	17	4	F14	180.0
75-700-101240009	700	686	776	165	480	560	25	60	46	110	165	210	21	4	F16	295.0
75-750-101240009	750	736	826	190	520	585	25	60	46	110	165	210	21	4	F16	325.0
75-800-101240009	800	786	880	190	525	610	25	60	46	110	165	210	21	4	F16	345.0
75-900-101240009	900	886	980	203	635	690	30	90	60	130	254	300	17	8	F25	475.0
75-010-101240009	1000	986	1085	216	685	740	30	90	60	130	254	300	17	8	F25	635.0

0 = PN 10 1 = PN 16.

Bigger sizes on request.